



GA-1310

Printing from Mac OS



© 2009 Electronics for Imaging, Inc. The information in this publication is covered under [Legal Notices](#) for this product.

45085389
5 May 2009

CONTENTS

INTRODUCTION	5
Terminology and conventions	5
About this document	6
User software	6
System requirements	6
SETTING UP PRINTING ON MAC OS X	7
Installing the Mac OS X printer files	7
Installing from the DVD	7
Downloading printer drivers using WebTools	8
Setting up the GA-1310 for printing	9
Setting up printing with Mac OS X v10.5	9
Setting up printing with Mac OS X v10.4.x	13
Setting up printing with Mac OS X v10.3.9	17
Configuring Installable Options	20
Using Desktop Printer (optional)	21
PRINTING UTILITIES	22
Printing from a USB device	22
FTP Printing	24

PRINTING FROM MAC OS X	25
Printing from applications with Mac OS X	25
Setting print options and printing from Mac OS X	25
Using presets	30
Defining and printing custom page sizes	32
Defining and editing custom page sizes in Page Setup	32
Enabling Two-Way Communication	35
INDEX	37

INTRODUCTION





This document describes how to install printer drivers and printer description files for the GA-1310 and how to set up printing from Apple Mac OS X computers. It also describes how to print to the GA-1310. For information about setting up network servers and clients to use the GA-1310, see [Configuration and Setup](#). For general information about using the color copier, your computer, application software, or network, see the documentation that accompanies those products.



For information about supported operating systems and system requirements, see [Welcome](#).

Terminology and conventions

This document uses the following terminology and conventions.

Term or convention	Refers to
Aero	GA-1310 (in illustrations and examples)
Copier	The copier attached to the GA-1310
Mac OS	Mac OS X
Titles in <i>italics</i>	Other documents in this set
	Topics for which additional information is available by starting Help in the software
	Tips and information
	Important information
	Important information about issues that can result in physical harm to you or others

About this document

This document covers the following topics:

- Installing printer files on Mac OS computers
- Setting up printing connections on Mac OS computers
- Installing GA-1310 printing utilities
- Printing from Mac OS computers

User software

The following table lists the user software that is described in this document. This is the user software you need for setting up basic printing on the GA-1310. Other documents may describe other user software depending on what you are trying to accomplish.

User Software	Description
PostScript Printer Description (PPD/Plugin) file	These files are used with the PostScript printer driver that allows the GA-1310 to appear in the Print and Page Setup dialog boxes of popular applications. The GA-1310 PPDs provide information about the copier to your application and printer driver.
PostScript screen fonts	These are the PostScript/True Type screen fonts that correspond to the printer fonts installed on the GA-1310. For a complete list of PostScript/True Type fonts installed on the GA-1310, print a font list. For more information, see Command WorkStation Help



System requirements

For detailed system requirements, see [Welcome](#), provided in your media pack.

SETTING UP PRINTING ON MAC OS X

To set up the GA-1310 as a PostScript printer on a Mac OS X computer, install the printer driver files that correspond to your copier. Printer drivers provide a way to communicate information about print jobs between your applications, the GA-1310, and the copier.

See the following table for the location of each procedure.

Procedure	See
Installing the Mac OS X printer files	page 7
Setting up the GA-1310 for printing	page 9

Installing the Mac OS X printer files

The printer driver files are provided on the User Software DVD or can be downloaded using WebTools. The following sections describe how to install the Mac OS X printer files for the GA-1310.

Installing from the DVD

The User Software DVD provides the following software for Mac OS X (see the OSX:Printer Driver folder):

- **OSX Installer:** Installs the printer driver files required to print from Mac OS X.
- **Language folders:** Printer description files that are installed by OSX Installer. You do not need to open these folders or install them manually on your computer. The appropriate files are installed by OSX Installer.

NOTE: The following procedure is for Mac OS X v10.5 and Mac OS X v10.4.x.

TO INSTALL THE PRINTER DRIVER FILES FOR MAC OS X

- 1 **Quit all open applications.**
- 2 **For Mac OS X v10.4.x: Make sure that the Printer Setup Utility is not running on your computer.**

Printer Setup Utility updates the list of available printers when it starts. If a printer description file is added while Printer Setup Utility is running, you cannot select the associated printer model until you restart.

- 3 **Insert the User Software DVD into the DVD drive.**
- 4 **Open the OSX : Printer Driver folder on the User Software DVD.**
- 5 **Double-click the OSX Installer icon to start installing the printer driver.**
- 6 **Follow the on-screen instructions.**

The OSX Installer installs the printer driver files that correspond to the GA-1310.

- 7 **When copying is complete, click Quit.**

Downloading printer drivers using WebTools

WebTools allows you to download installers for printer drivers to your computer directly from the GA-1310.

Before you download the printer driver files, the administrator must enable Internet access to the GA-1310.

For more information about setting up and starting WebTools, see *Utilities*.

TO DOWNLOAD PRINTER DRIVERS WITH WEBTOOLS

- 1 **Start your Internet or intranet browser and type the DNS name or IP address of the GA-1310.**
- 2 **Click the Downloads tab.**
- 3 **Click the link for the printer drivers that you want to install (Printer Files for Mac OS X).**

A file named OSX.dmg is downloaded to your desktop. The file contains a folder named Printer Driver in a compressed format. If your Internet browser is equipped with an expander utility, such as StuffIt Expander, the folder decodes and decompresses automatically.

If the Printer Driver folder does not automatically decode and decompress, double-click the file to start the utility that performs that function.

- 4 **Install the appropriate printer driver for your operating system.**

For instructions on installing the Mac OS X printer driver, see “[To install the printer driver files for Mac OS X](#)” on page 8.

Setting up the GA-1310 for printing

The following section describes how to set up the GA-1310 on a Mac OS X computer.

NOTE: The steps for setting up the GA-1310 on a computer with Mac OS X v10.5 and Mac OS X v10.4.x are different. Any differences are noted in the following sections.

Setting up printing with Mac OS X v10.5

Use the following procedures to set up the GA-1310 on a computer with Mac OS X v10.5.

To SET UP THE GA-1310 FROM THE PRINT DIALOG BOX

- 1 **Open a file in your application.**
- 2 **Choose Print from the File menu.**

The Print dialog box appears.
- 3 **Select Add Printer from the Printer list.**

To SET UP THE GA-1310 USING PRINT & FAX

- 1 **Choose System Preferences from the Apple menu and then choose Print & Fax.**

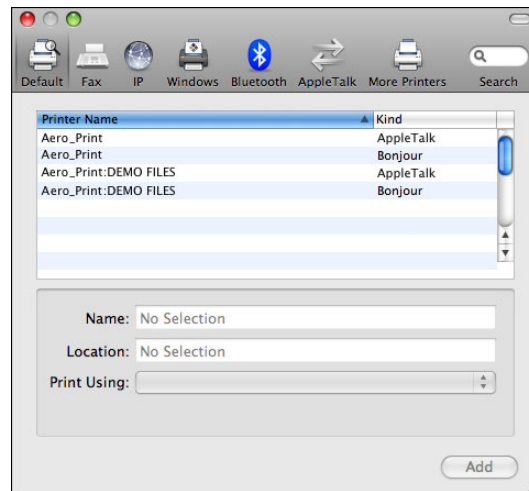
The Print & Fax dialog box appears.
- 2 **Click the “+” button to add a printer.**

In the dialog box that appears, select a printer connection. Use one of the following connections to add a printer.

Printing connection	See
Default (AppleTalk)	page 10
IP Printer	page 11
AppleTalk	page 12

To ADD A PRINTER WITH THE DEFAULT (APPLETALK) CONNECTION**1 Click the Default icon in the dialog box.**

The Default pane appears.



The names of printers with default connections are listed. The Virtual Printers that are configured at the GA-1310 are also listed.

NOTE: The names of the Virtual Printers appear as <printer name:Virtual Printer name> in the Printer Name list.

2 Select the GA-1310 from the list.

The information about the selected printer appears at the bottom of the Default pane. The appropriate PPD file for the GA-1310 is automatically selected. If your administrator configured the Secure Access printing at the GA-1310, the PPD file for Secure Access printing is selected.

3 Click Add.

For AppleTalk: The GA-1310 name appears in the Printer List of the Print & Fax dialog box.

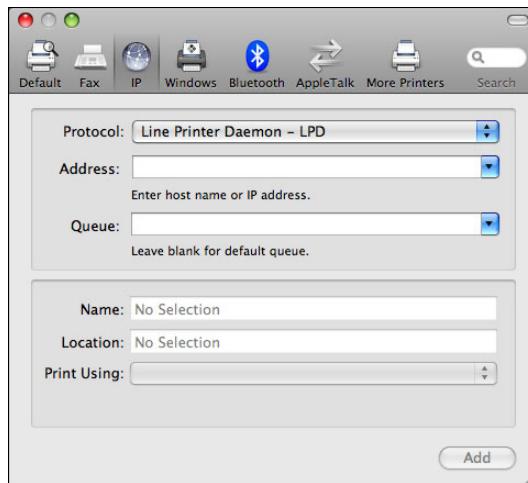
4 Choose GA-1310 from the Printer List.**5 Click Options & Supplies, and then choose the Driver tab.****6 Specify the installable option settings and then click OK.****7 In the Installable Options pane, select the option items that are installed at the copier, and then click Continue.**

The GA-1310 name appears in the Printer List.

TO ADD A PRINTER WITH THE IP PRINTER CONNECTION

- 1 Click the IP icon in the dialog box.

The IP pane appears.



- 2 For LPD printing, select Line Printer Daemon - LPD from the Protocol list and type the GA-1310 IP address or DNS name in the Address field, and the print connection (print, hold or direct) in the Queue field. Proceed to [step 4](#).

For IP printing, select Internet Printing Protocol - IPP from the Protocol list and type the GA-1310 IP address or DNS name in the Address field. Proceed to [step 3](#).

The IP address or DNS name appears in the Name field.

- 3 Type "ipp/" followed by the print connection (print, hold, direct, or name of virtual printer) all in lowercase letters in the Queue field.

NOTE: The GA-1310 requires a Queue name. Do not leave the Queue field empty.

- 4 For Print Using, choose "Select a driver to use" from the list.
- 5 Type GA-1310 in the search filter to narrow the search, and then select the PPD file from the list.
- 6 Click Add.

The Installable Options pane in the Print & Fax dialog box appears.

- 7 Click Continue to return to the Print & Fax dialog box.

The GA-1310 with its IP address appears in the Printer List.

- 8 Choose GA-1310 from the Printer List.
- 9 Click Options & Supplies, and then choose the Driver tab.
- 10 Specify the installable option settings, and then click OK.



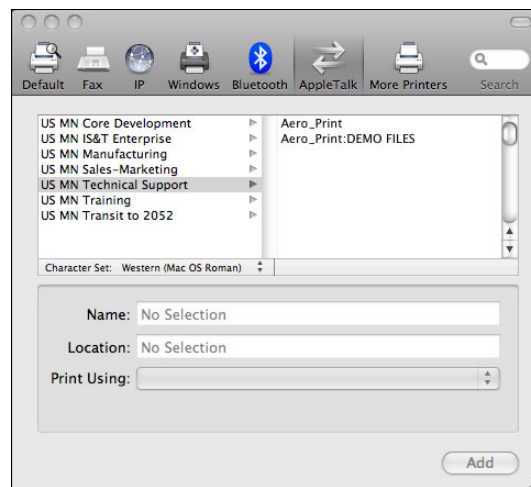
For information about configuring installable options, see printer driver Help.

TO ADD A PRINTER WITH THE APPLE TALK CONNECTION

NOTE: Use this procedure if the GA-1310 is in a different AppleTalk zone than your computer. If the GA-1310 is in the same zone, it is displayed as a default following the procedure on [page 10](#).

1 Click the AppleTalk icon in the dialog box.

The AppleTalk pane appears.

**2 Select the AppleTalk zone for the GA-1310 from the list.**

The AppleTalk printers in the specified zone are listed. The Virtual Printers that are configured at the GA-1310 are also listed.

NOTE: The names of the Virtual Printers appear as <printer name:Virtual Printer name> in the Name list.

3 Select the GA-1310 name in the Printer list and click Add.

The GA-1310 name appears in the Printer List of the Print & Fax dialog box.

4 Choose GA-1310 from the Printer List.**5 Click Options & Supplies, and then choose the Driver tab.****6 Specify the installable option settings, and then click OK.**

Setting up printing with Mac OS X v10.4.x

Use the following steps for setting up the GA-1310 on a computer with Mac OS X v10.4.x.

TO SET UP THE GA-1310 FROM THE PRINT DIALOG BOX

- 1 **Open a file in your application.**
- 2 **Choose Print from the File menu.**
The Print dialog box appears.
- 3 **Select Add Printer from the Printers list.**

TO SET UP THE GA-1310 USING PRINT & FAX

- 1 **Choose System Preferences from the Apple menu and then choose Print & Fax.**
The Print & Fax dialog box appears.
- 2 **Click the “+” button to add a printer.**
In the dialog box that appears, select a printer connection.

TO SET UP THE GA-1310 USING PRINTER SETUP UTILITY

- 1 **In the Finder, choose Utilities from the Go menu.**
- 2 **Start Printer Setup Utility.**

The Printer List dialog box appears.

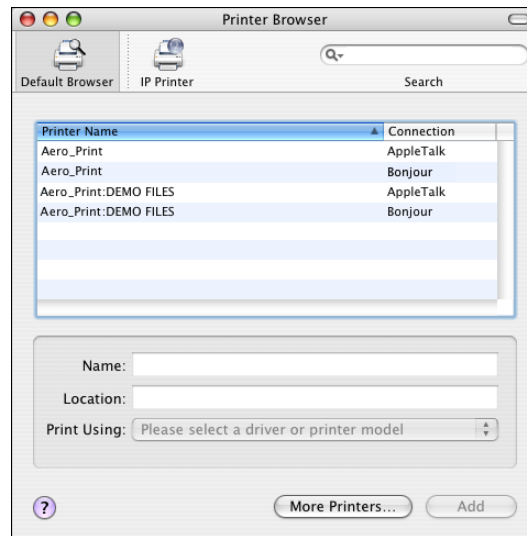
- 3 **Click Add.**

The Printer Browser dialog box appears. Use one of the following connections to add a printer.

Printing connection	See
Default Browser (AppleTalk)	page 14
IP Printer	page 15
AppleTalk	page 16

To ADD A PRINTER WITH THE DEFAULT BROWSER (APPLETALK) CONNECTION**1 Click Default Browser in the Printer Browser dialog box.**

The Default Browser pane appears.



The names of printers with default connections are listed. The Virtual Printers that are configured at the GA-1310 are also listed.

If the printer is not listed in the Printer Name list, click More Printers.

NOTE: The names of the Virtual Printers appear as <printer name:Virtual Printer name> in the Name list.

2 Select the GA-1310 from the list.

The information about the selected printer appears at the bottom of the Default Browser pane. The appropriate PPD file for the GA-1310 is automatically selected.

3 Click Add.

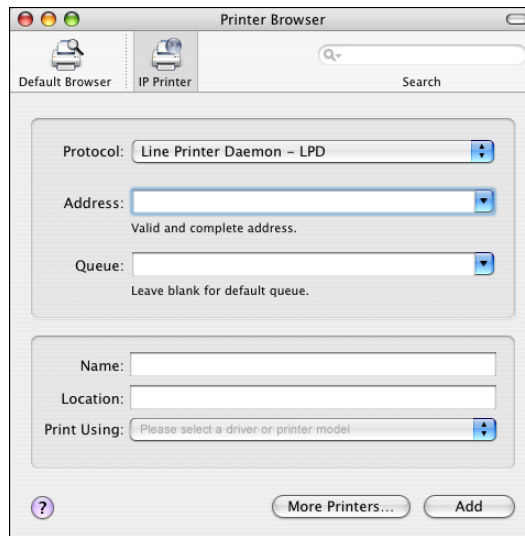
For AppleTalk: The GA-1310 name appears in the Printer List of the Print & Fax dialog box.

4 Choose GA-1310 from the Printer List and click Show Info.**5 In the Printer Info dialog box, choose Installable Options, specify the installable option settings, and then click Apply Changes.****6 Close the Printer Info dialog box.**

TO ADD A PRINTER WITH THE IP PRINTER CONNECTION

- 1 Click IP Printer in the Printer Browser dialog box.

The IP Printer pane appears.



- 2 For LPD printing, select Line Printer Daemon - LPD from the Protocol list and type the GA-1310 IP address or DNS name in the Address field, and the print connection (print, hold or direct) in the Queue field. Proceed to [step 4](#).

For IP printing, select Internet Printing Protocol - IPP from the Protocol list and type the GA-1310 IP address or DNS name in the Address field. Proceed to [step 3](#).

The IP address or DNS name appears in the Name field.

- 3 Type "ipp/" followed by the print connection (print, hold, direct, or name of virtual printer) all in lowercase letters in the Queue field.

NOTE: The GA-1310 requires a Queue name. Do not leave the Queue field empty.

- 4 For Printer Using, choose the appropriate manufacturer name or model, and then select the file for the GA-1310 PPD.
- 5 Click Add.

The Installable Options pane in the Printer Browser dialog box appears.

- 6 Click Continue to return to the Print & Fax dialog box.

The GA-1310 with its IP address appears in the Printer List.

- 7 Choose GA-1310 from the Printer List and click Show Info.
- 8 In the Printer Info dialog box, choose Installable Options, specify the installable option settings, and then click Apply Changes.

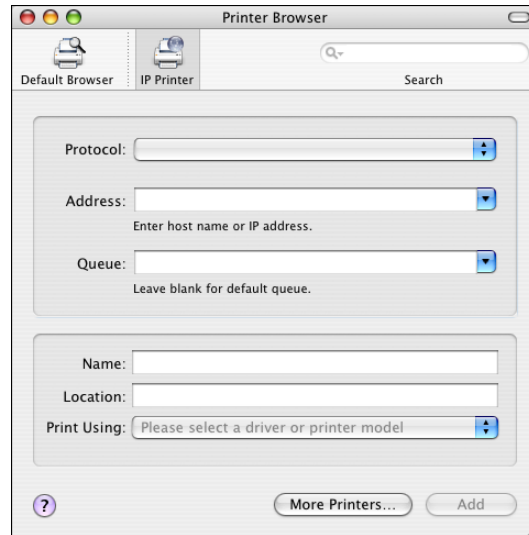


For information about configuring installable options, see printer driver Help.

TO ADD A PRINTER USING THE APPLE TALK CONNECTION

NOTE: Use this procedure if the GA-1310 is in a different AppleTalk zone than your computer. If the GA-1310 is in the same zone, it is displayed as a default following the procedure on [page 14](#).

1 Click Default Browser or IP Printer in the Printer Browser dialog box.



2 Click More Printers.

The dialog box with a list of other connections appears.

3 Select AppleTalk from the connection list.

The AppleTalk pane appears.

4 Select the AppleTalk zone for the GA-1310 from the list.

The AppleTalk printers in the specified zone are listed. The Virtual Printers that are configured at the GA-1310 are also listed.

NOTE: The names of the Virtual Printers appear as <printer name:Virtual Printer name> in the Name list.

5 Select the GA-1310 name in the Name list and click Add.

The GA-1310 name appears in the Printer List of the Print & Fax dialog box.

6 Choose GA-1310 from the Printer List and click Show Info.

7 In the Printer Info dialog box, choose Installable Options, specify the installable option settings, and then click Apply Changes.

For information about configuring installable options, see printer driver Help.

8 Close the Printer Info dialog box.



Setting up printing with Mac OS X v10.3.9

Use the following steps for setting up the GA-1310 on a computer with Mac OS X v10.3.9.

TO SET UP THE GA-1310 FOR PRINTING

- 1 In the Finder, choose Utilities from the Go menu.**
- 2 Start Printer Setup Utility or Print Center.**

The Printer List dialog box appears.

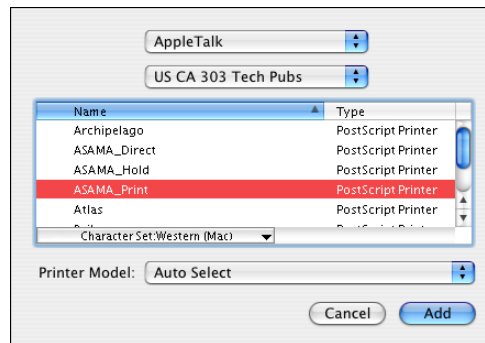
- 3 Click Add.**

In the dialog box that appears, select a printer connection. Use one of the following connections to add a printer.

Printing connection	See
AppleTalk	page 18
LPD/LPR	page 19

To ADD A PRINTER WITH THE APPLE TALK CONNECTION**1 Select AppleTalk from the list.**

The AppleTalk pane appears.

**2 Select the AppleTalk zone for the GA-1310 from the zone pop-up list.**

The AppleTalk printers in the specified zone are listed. The Virtual Printers that are configured at the GA-1310 are also listed.

NOTE: The names of the Virtual Printers appear as <printer name:Virtual Printer name> in the Name list.

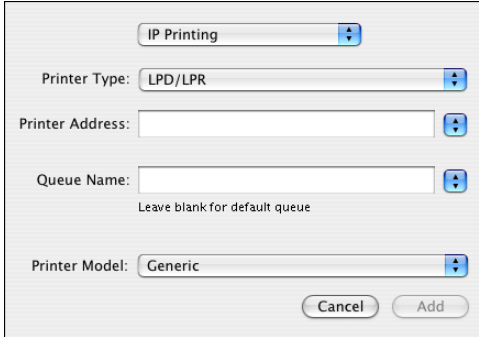
3 Select the GA-1310 name in the Name list.**4 Click Add.**

The appropriate PPD file for the GA-1310 is automatically selected.

The GA-1310 name appears in the Printer List.

TO ADD A PRINTER WITH THE LPD/LPR CONNECTION**1 Select IP Printing from the list.**

The IP Printing pane appears.



The screenshot shows a dialog box titled "Add Printer" with the following fields and options:

- Printer Type:** LPD/LPR
- Printer Address:** (empty field)
- Queue Name:** (empty field) with the instruction "Leave blank for default queue" below it.
- Printer Model:** Generic

Buttons at the bottom: Cancel, Add

2 Select LPD/LPR from the Printer Type list.**3 Type the GA-1310 IP address in the Printer Address field.****4 Type the Virtual Printer name in the Queue Name field or leave it blank for the default queue.****5 Select the appropriate model from the Printer Model list.**

The Model Name pane appears in the dialog box.

6 Select the PPD file from the Model Name list.**7 Click Add.**

The GA-1310 with its IP address appears in the Printer List.

Configuring Installable Options

To use the print options for the copier and GA-1310 appropriately, you must configure the GA-1310 from your computer for the options that are installed on the copier. Configure the options manually, or for TCP/IP network connections, use the Two-Way Communication feature to retrieve automatically supply levels and paper tray information only.

The following procedures describe how to manually configure the GA-1310.

NOTE: When you configure installable options manually, be sure to match the actual configuration of the copier. Otherwise, the print options shown in the printer driver might not match the print options actually available.

TO CONFIGURE INSTALLABLE OPTIONS USING PRINT & FAX ON MAC OS X V10.5

- 1 **Choose System Preferences from the Apple menu and then choose Print & Fax.**
The Print & Fax dialog box appears.
- 2 **In the Printer List, select GA-1310 and click Options & Supplies.**
- 3 **Click the Driver tab.**
- 4 **Select the option items that are installed at the copier.**
- 5 **Click OK to apply changes.**

TO CONFIGURE INSTALLABLE OPTIONS USING PRINTER SETUP UTILITY ON MAC OS X V10.4.x

- 1 **In the Finder, choose Utilities from the Go menu.**
- 2 **Double-click the Printer Setup Utility icon.**
- 3 **In the Printer List, select GA-1310 and click the Show Info icon.**
- 4 **Click Name and Location and choose Installable Options.**
- 5 **Select the option items that are installed at the copier.**
- 6 **Click Apply Changes.**
- 7 **Close the window.**

Using Desktop Printer (optional)

After adding GA-1310 in the Printer List in either Print & Fax or the Printer Setup Utility, you can create and use the Desktop Printer feature.

To CREATE A DESKTOP PRINTER WITH MAC OS X v10.5

- 1 Choose System Preferences from the Apple menu and then choose Print & Fax.
- 2 Select GA-1310 from the Printer List, and drag-and-drop it on the desktop.

You can now print a file to the GA-1310 by dragging the file to the GA-1310 desktop printer icon.

To CREATE A DESKTOP PRINTER WITH MAC OS X v10.4.x

- 1 Choose utilities from the Go menu and open the Printer Setup Utility.
- 2 Select GA-1310 from the Printer List.
- 3 Choose Create Desktop Printer from the Printers menu.
- 4 Specify a name and location for the desktop printer and click Save.

You can now print a file to the GA-1310 by dragging the file to the GA-1310 desktop printer icon.

PRINTING UTILITIES

The following methods allow you to print to the GA-1310:

- USB device
- FTP Printing

Printing from a USB device

You can print files on a USB device to the GA-1310. Files, including those that originated on a Mac computer, can be saved to the USB device and downloaded directly to the GA-1310.

You can print files automatically from a USB device to one of the standard print queues on the GA-1310: Print, Hold, or Direct or to published virtual printers. Verify with your administrator that these connections are published in Setup. You can print any of the files on your USB device, specify where to send them, and also select some print options. For more information about virtual printers, see [Utilities](#).

Before you print files from a USB device, ask your administrator to configure the appropriate options. For more information about configuring the appropriate options, see [Configuration and Setup](#).

There are two ways to print files from a USB device, automatic printing and manual printing.

Automatic printing

To print automatically to Print, Hold, or Direct queues or to published virtual printers with the Print All setting, set up folders on your USB device with the names Print, Hold, and Direct, and the names of any published virtual printers. When you plug the USB device into a USB port on the GA-1310, the files in those folders are sent automatically to the corresponding queues.

TO PRINT FILES FROM THE USB DEVICE



1 Configure the USB printing options in Setup.

For more information, see Configure Help.

2 Create folders at the top level (root level) of the USB device named Print, Hold, and Direct.

3 Save the files (PS, EPS, TIFF, and PDF) from the user's computer to the USB device.

Files copied to the Print, Hold, and Direct folders are downloaded to the corresponding print connection on the GA-1310 automatically when you connect the USB device to the GA-1310. Files copied to the root level of the USB device are downloaded to the Print queue.

- 4 **Remove the USB device from the computer and connect it to the USB connector on the GA-1310.**



Make sure the USB device is properly stopped before you disconnect it from the computer. For the location of the USB port, see *Configuration and Setup*.

Manual printing

When USB Media Auto Print is disabled in Server Setup, manually select the files you want to print from the USB device and specify where to send them.

TO PRINT USING USB MEDIA SERVER

- 1 **Insert the USB device into a USB port on the GA-1310.**
- 2 **Press the Fiery button on the copier touch panel.**
- 3 **Press the USB button on the copier touch panel and switch to the Media Server browsing window.**

NOTE: The Media Server browsing window appears only when a USB device is inserted into the GA-1310.

- 4 **When the message “USB Media Server” appears, navigate to the file that you want to print.**

The files and directory on the USB device are displayed on the copier touch panel. Both files at the root level of the USB device and folders are displayed.

The First/Prev/Next/Last button is used to search for files. When a directory is displayed, press the Browse button to move to a lower class. Press the Upper Directory button to return to the upper directory. Press the Print All button to print all documents in the current directory.

- 5 **If you selected Print with Options, specify the options and press Print after each selection.**

The print options you can choose are:

- Queue (hold, print or direct)
- Number of Copies
- Duplex (Default, Off, Top-Top or Top-Bottom)
- Page Size

- 6 **Remove the USB device from the GA-1310 after the completion of printing.**

FTP Printing

If FTP Services are enabled on the GA-1310, the GA-1310 is set up as an FTP server. You can send jobs to the GA-1310 using FTP printing. For more information on configuring FTP Services, see [Configuration and Setup](#).

You can use any FTP client software. Before you use FTP printing, the FTP client software requires the following information (see your administrator):

- IP address or DNS name for the GA-1310
- Directory or path to send the job, such as the Print Queue, Hold Queue or published virtual printers (if supported)

NOTE: You cannot print to the Direct connection using FTP printing.

- User name and password (if required)

You can send PostScript (PS), Tagged Image File Format (TIFF), and Portable Document Format (PDF) files to the GA-1310. Encapsulated PostScript (EPS) files are not supported for FTP printing.

To PRINT FILES TO THE GA-1310 USING THE FTP PROTOCOL

1 Connect to the GA-1310 with your FTP client software.

Folders corresponding to the Print queue and Hold queue are displayed. Folders for any published virtual printer are also displayed.

2 Navigate to the folder representing the print connection or published virtual printer.

3 Upload your job to the folder that you want.

After the job is printed, it is deleted from the GA-1310.

PRINTING FROM MAC OS X

Print to the GA-1310 as you would print to any other printer from a Mac OS X application. Select a printer and print the file from within the application. In addition to this method, you can download files to the GA-1310 using Hot Folders (an option) (see [Utilities](#)) and the Docs WebTool (see [Utilities](#)), and print documents using Command WorkStation (see [Utilities](#)).

Printing from applications with Mac OS X

After you install the GA-1310 printer driver files using the OSX Installer, you can print directly from most Mac OS X applications. For more information about installing printer driver files with the OSX Installer see [page 7](#).

To achieve optimal printing results from specific applications, see [Color Printing](#) and [Fiery Color Reference](#).

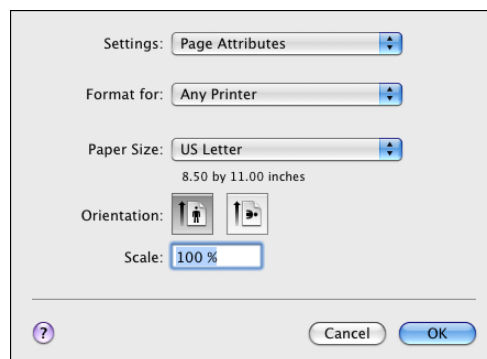
Setting print options and printing from Mac OS X

In Mac OS X applications, print options are set from the Page Setup dialog box and the Print dialog box. For information about specific print options, see [Print Options](#).

NOTE: Some default print options are set by your administrator during Setup. For information about the current server default settings, contact your administrator or the operator.

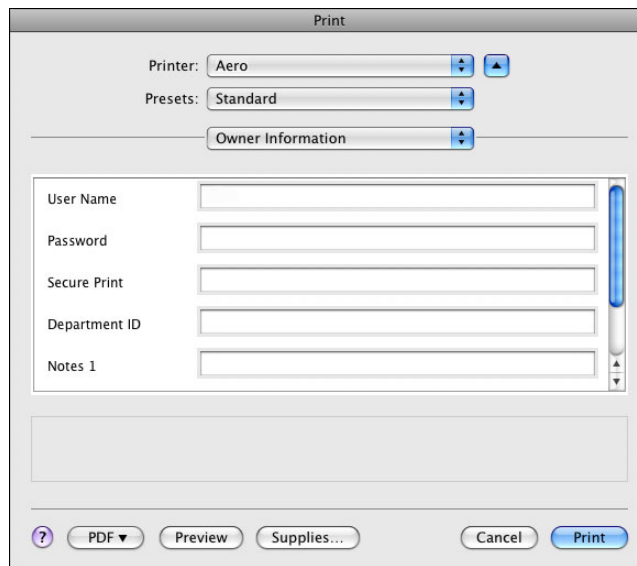
TO SET PRINT OPTIONS AND PRINT FROM MAC OS X

- 1 Open a file and choose **Page Setup** from the application's **File** menu.
- 2 For **Settings**, choose **Page Attributes**. For **Format for**, choose the **GA-1310**.



- 3 Select the **Page** settings for your print job.

- 4 Click OK.
- 5 Choose Print from the application's File menu.
- 6 Choose the GA-1310 as your printer.
- 7 Choose Owner Information from the drop-down list.



- 8 Type your user name or domain\user name in the User Name field if User Authentication is enabled on the GA-1310.
- 9 Type your local password or domain password in the Password field if User Authentication is enabled on the GA-1310.
- 10 Type a password in the Secure Print field if you are sending a secure print job.
- 11 Type the Department ID specified for your group (if necessary).

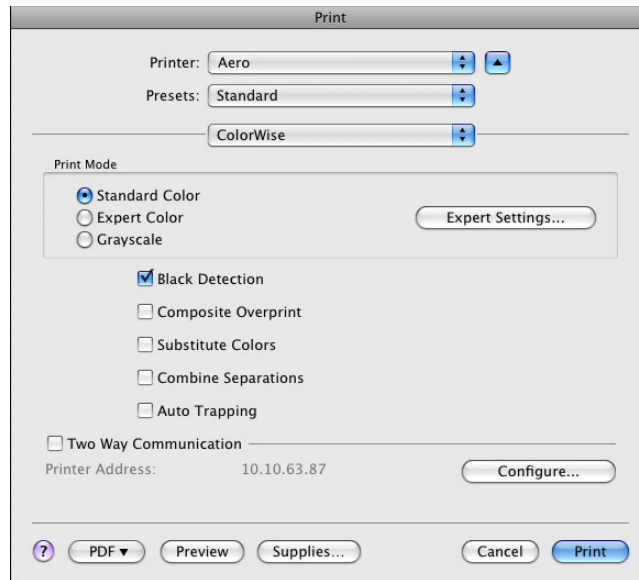
The Department ID is assigned at the copier touch panel display. For more information, see the documentation that accompanies your copier.
- 12 Type information in the Notes 1 and Notes 2 fields.

Enter user and job identification information for managing purposes, or other information that is required at your site.

The operator in Command WorkStation can view and edit the information you type in the Notes field. This information also appears in the Job Log.
- 13 Type instructions to the operator about the job in the Instructions field.

These instructions can be displayed in Command WorkStation but do not appear in the Job Log. These instructions can be edited by the operator.
- 14 Choose ColorWise from the drop-down list.

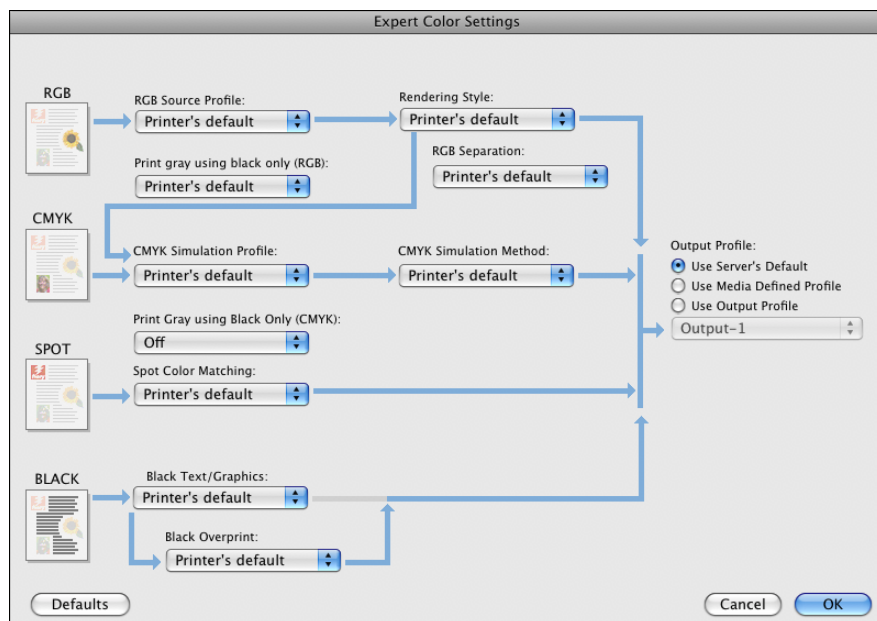
15 Specify color print options for the job.



16 To use advanced color management features, such as Rendering Style, click Expert Settings.

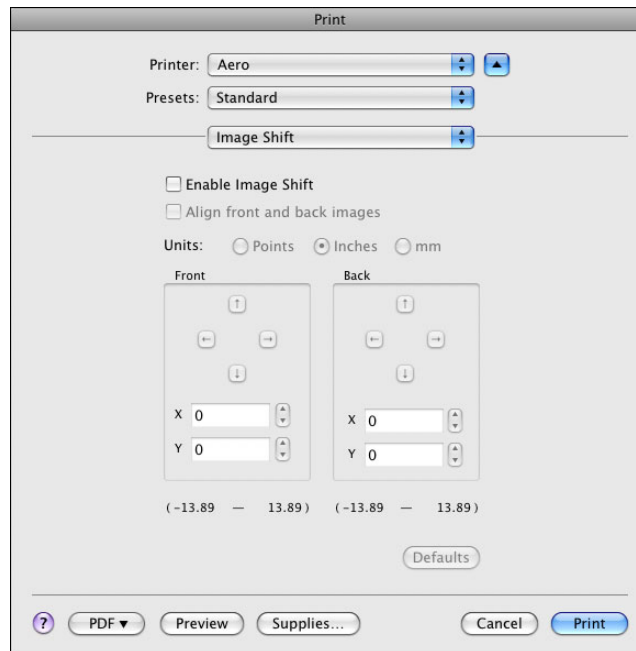
The Expert Color Settings dialog box appears.

NOTE: To display the color settings from the GA-1310 in this dialog box, make sure that Two-Way Communication is enabled. For information about enabling Two-Way Communication, see [page 35](#).



To set the Output Profile option to Use Media Defined Profile, you must first make sure that Two-Way Communication is not enabled, and then you can select Use Media Defined Profile from the drop-down list for Output Profile. Enable Two-Way Communication if you want to be able to select specific downloaded output profiles.

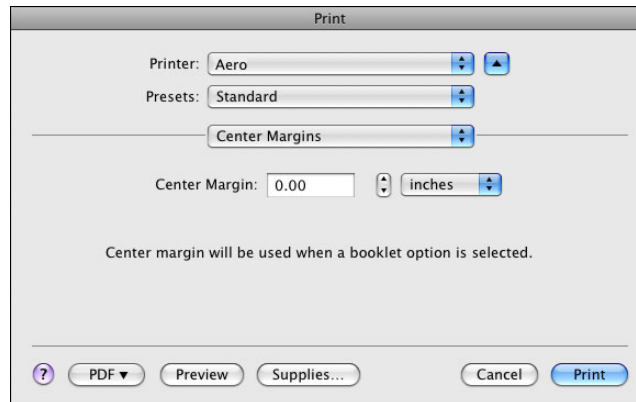
- 17 Specify the color settings for the print job and click OK.
- 18 To shift the position of the print image on the page, choose Image Shift from the drop-down list and specify the shift distances.



You can shift the print image to allow for binding, for example.

- 19 To specify a margin value (millimeters or inches) at the folding line for imposition printing, choose Center Margins from the drop-down list.

NOTE: Center Margins is only available with the Booklet print option.



20 Choose Printer Features to specify printer-specific options. Specify settings for each selection in the Feature Sets list.

These print options are specific to the GA-1310 and the copier. You must choose each Feature Set to see all the options. These options override settings in GA-1310 Printer Setup. You can change these settings from Command WorkStation.

If you choose Printer's default, the job prints according to the settings specified in Setup.

For more information about these options and overrides, see [Print Options](#).

Some print options that are selectable from an application or are provided by Mac OS are similar to the print options that are specific to the GA-1310 and the copier. In these cases, use the print options specific to the GA-1310 and the copier that appear in the Fiery Features menu. The application may not set up the file properly for printing on the GA-1310, resulting in unexpected finishing, printing errors, or longer processing time. When you print to your selected copier, make sure to clear the Collated check box in the Copies & Pages pane of the Mac OS X v10.4 or earlier printer driver or in the main pane of the Mac OS X v10.5 printer driver.

If you select an invalid setting or combination of settings when printing a document, no error message appears. For example, you may be able to select duplex printing on transparency media. Invalid settings and combinations are ignored by the GA-1310.

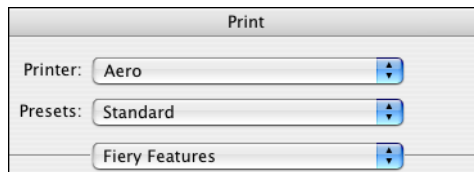
21 Click Print.

Using presets

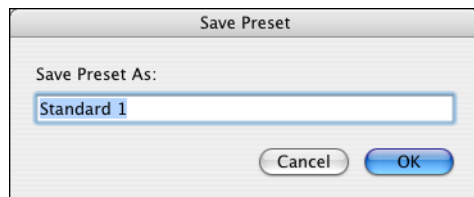
Saving print option settings to your hard disk enables you to load specifically configured settings for a particular job as a preset.

TO CREATE A PRESET

- 1 Open a file and choose Print from the application's File menu.
- 2 Choose Printer Features from the drop-down list.



- 3 Choose each Feature Set to select the print settings as desired.
- 4 Choose Save As from the Presets drop-down list.



- 5 Enter a descriptive name for the preset and click OK.

The preset is added to the list of available presets.

The presets are available any time you access the Print dialog box. They remain on your local disk until you delete them.

- 6 Choose Save from the Presets drop-down list if you make changes to the print settings for the specified Preset.

TO CHOOSE A PRESET FOR PRINT JOBS

- 1 **Open a file and choose Print from the application's File menu.**
- 2 **Choose a preset from the Presets drop-down list.**

The preset is used until you select another one.

NOTE: When you select a preset from an application's Print dialog box, the preset is used only for the current application session.

TO DELETE PRESETS

- 1 **Open a file and choose Print from the application's File menu.**
- 2 **Choose a preset from the Presets drop-down list.**
- 3 **Choose Delete from the Presets drop-down list.**

TO RENAME PRESETS

- 1 **Open a file and choose Print from the application's File menu.**
- 2 **Choose a preset from the Presets drop-down list.**
- 3 **Choose Rename from the Presets drop-down list.**
- 4 **Enter a descriptive name for the preset and click OK.**

The renamed preset is added to the list of available presets.

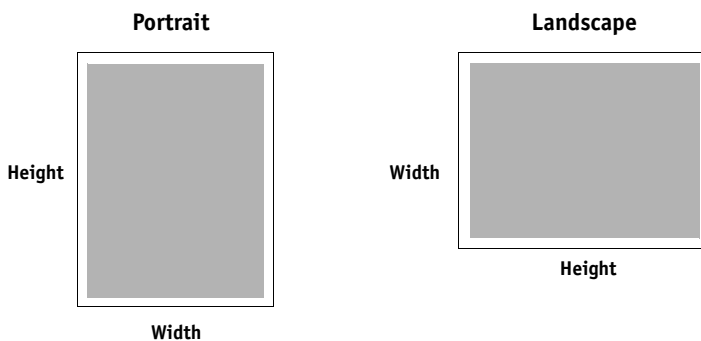
The presets are available any time you access the Print dialog box. They remain on your local disk until you delete them.

TO REVERT TO THE DEFAULT PRESET

- 1 **Open a file and choose Print from the application's File menu.**
- 2 **Choose Standard from the Presets drop-down list to revert to the default preset.**

Defining and printing custom page sizes

With custom page sizes, you define the dimensions of a printed page. After you define a custom page size, you can use it from within an application without redefining it each time you print. When you create custom page sizes, specify Width dimensions to correspond with the shorter side of your job and specify Height dimensions to correspond with the longer side of your job. Set custom page sizes in this way, regardless of the orientation settings in the application.



NOTE: Custom page sizes are not supported with Imposition jobs.

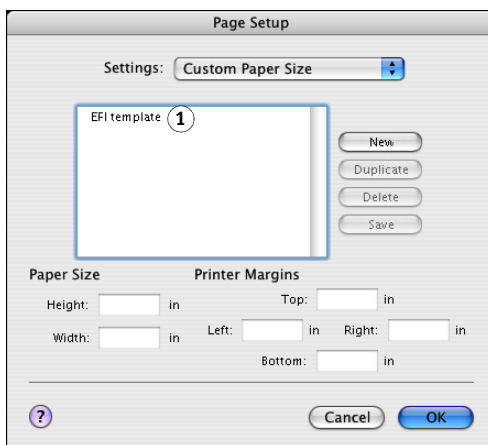
Defining and editing custom page sizes in Page Setup

With custom page sizes, you define page dimensions and margins. Use Page Setup to define a custom page size. When you define or edit a custom page size, use the following procedures.

TO DEFINE A CUSTOM PAGE SIZE ON MAC OS X V10.3.9

- 1 Choose Page Setup from the application’s File menu.
- 2 Choose Custom Paper Size from the Settings menu.

1 Custom page names



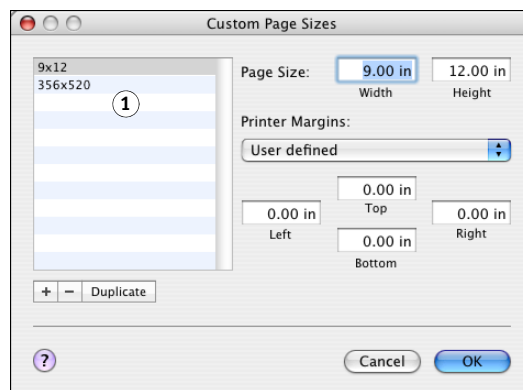
- 3 Click **New** and type a name for the custom page size.
- 4 Enter the page dimensions and margins.
- 5 Click **Save**.
- 6 Click **OK** to exit.

The custom page size you defined is added to the list of Paper Size selections in the Page Setup dialog box.

TO DEFINE A CUSTOM PAGE SIZE ON MAC OS X V10.4.X AND V10.5

- 1 Choose **Page Setup** from the application's **File** menu.
- 2 Choose **Manage Custom Sizes** from the **Page Size** menu.

1 Custom page names




- 3 Click the plus sign (**+**) to add a new custom page size.
- 4 Double-click **Untitled** to type a name for the custom page size.
- 5 Enter the page dimensions and margins.
- 6 Click **OK** to exit.

The custom page size you defined is added to the list of Page Size selections in the Page Setup dialog box.

TO EDIT A SAVED CUSTOM PAGE SIZE

- 1 Choose Page Setup from the application's File menu.
- 2 Choose Custom Paper Size from the Settings menu.
For Mac OS X v10.4.x and v10.5, choose Manage Custom Sizes from the Page Size menu.
- 3 Select the Custom Paper Size name.
- 4 Edit the page dimensions and margins.
- 5 Replace the existing Custom Page name by clicking it.
For Mac OS X v10.4.x and v10.5, proceed to [step 7](#).
- 6 Click Save.
- 7 Click OK to exit.

TO DELETE A CUSTOM PAGE SIZE

- 1 Choose Page Setup from the application's File menu.
- 2 Choose Custom Paper Size from the Settings menu.
For Mac OS X v10.4.x and v10.5, choose Manage Custom Sizes from the Page Size menu.
- 3 Select the Custom Paper Size name.
- 4 Click Delete.
For Mac OS X v10.4.x and v10.5, click the minus sign () to delete a custom page size.
- 5 Click OK to exit.

TO MAKE A COPY OF THE CUSTOM PAGE SIZE

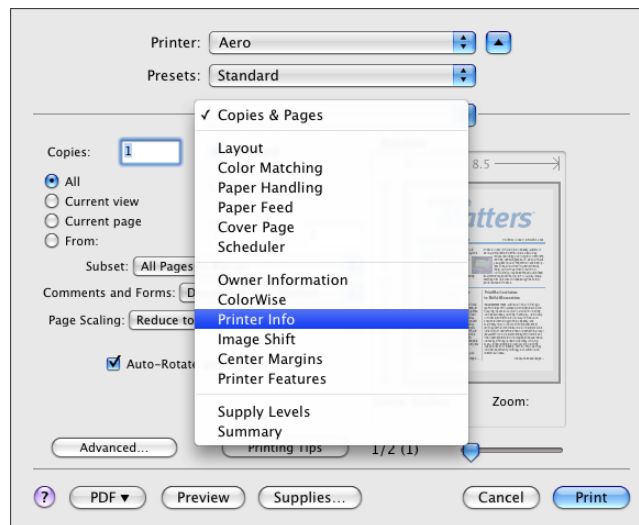
- 1 Choose Page Setup from the application's File menu.
- 2 Choose Custom Paper Size from the Settings menu.
For Mac OS X v10.4.x and v10.5, choose Manage Custom Sizes from the Page Size menu.
- 3 Select the Custom Paper Size name.
- 4 Click Duplicate.
- 5 Click OK to exit.

Enabling Two-Way Communication

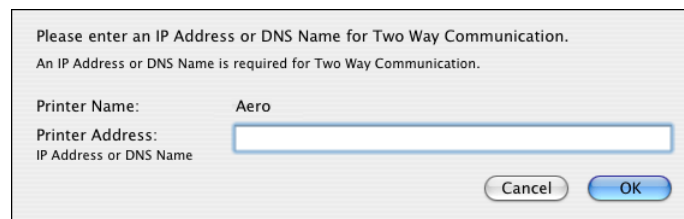
If you enabled a TCP/IP network, you can retrieve copier status and ColorWise settings from the GA-1310 and display them in the printer driver using the Two-Way Communication feature. The copier status includes the current paper and toner levels. The ColorWise settings can be set on the GA-1310 using ColorWise Pro Tools. For more information about ColorWise print options, see [Color Printing](#).

TO ENABLE TWO-WAY COMMUNICATION

- 1 Open a file and choose Print from the application's File menu.
- 2 Choose the GA-1310 as your printer.
- 3 Choose Printer Info, or select ColorWise and select the Two-Way Communication option.



A dialog box appears requesting an IP address or DNS name.



NOTE: If the dialog box does not appear automatically, click Configure.

- 4 Type the GA-1310 IP address or DNS name in the dialog box.
- 5 Click OK.

6 To update the copier status in the Printer Info window, click Refresh.

- 1 Status light
- 2 Paper Tray information
- 3 Toner levels



- **Status light:** Displays the copier status, such as idle or printing, or error conditions that can prevent you from printing.
- **Paper Tray Info:** Displays the tray name and the amount of paper remaining in the specified tray as a percentage.
- **Toner Levels:** Displays the amount of remaining toner as a percentage. The toner amount displayed is roughly calculated and may not match the exact amount of toner remaining.

INDEX

A

AppleTalk connection, Mac OS X 12, 16, 18
automatic printing from USB device 22

C

Color options, updating automatically 35
ColorWise 26
Command WorkStation 25
custom page sizes
 defining dimensions and margins
 for Mac OS X v10.3.9 32
 for Mac OS X v10.4.x and v10.5 33
deleting 34
duplicating 34
editing 34

D

Default Browser connection 10, 14
default print options 25
Department ID print option 26
Docs tab in WebTools 25
Downloads tab in WebTools 8

E

Expert Color Settings 27

F

Feature Sets 29
FTP Printing 24

H

Hot Folders 25

I

installable options
 configuring 20
Instructions field 26
IP Printer connection 11, 15

L

Language folders 7
Line Printer Daemon - LPD 11, 15
LPD/LPR connection, Mac OS X 19

M

Mac OS X
 AppleTalk connection 12, 16, 18
 Default Browser connection 10, 14
 IP Printer connection 11, 15
 Line Printer Daemon - LPD 11, 15
 LPD/LPR connection 19
 printer driver installation 7
 printer driver setup 9
Mac OS X applications, printing from 25

N

Notes field 26

O

OSX Installer 8, 25
Owner Information print option 26

P

Page Setup dialog box 25
PostScript fonts 6
PostScript Printer Description (PPD) files, *see*
 PPD files
PostScript screen fonts 6
PPD files 6, 25
presets
 choosing for a print job 31
 creating 30
 deleting 31
 renaming 31
 reverting to default 31
print device status, viewing 35
Print dialog box 25
print options
 setting 25

- printer drivers
 - downloading with WebTools 8
 - installing 7
 - setting up 9
- Printer Features 29
- Printer Setup Utility 8
- printing
 - from Mac OS X applications 25
 - FTP 24

S

- screen fonts
 - PostScript 6
- Secure Print option 26

T

- terminology used for product names 5
- Two-Way Communication, enabling 35

U

- USB device
 - automatic printing 22
 - manual printing 23
 - printing files from 22
- USB Media Server
 - printing files from 23
 - setting up 23
- User Authentication
 - password option 26
 - user name option 26

W

- WebTools
 - Docs tab 25
 - Downloads tab 8