



GA-1310

Welcome



© 2009 Electronics for Imaging, Inc. The information in this publication is covered under [Legal Notices](#) for this product.

45085373  
5 May 2009

## WELCOME





This *Welcome* document provides information about system requirements and an overview of how to set up the GA-1310 so that you can begin printing. It describes the initial tasks you must perform and points you to sections in the user documentation where the procedures are described in detail. This document also provides a description of the user documents on the User Documentation CD and instructions on printing them.

This document assumes that you have already installed the copier components. Details about the copier, the network, remote computers, software applications, and Microsoft Windows are beyond the scope of this document.

In addition to this document, also read Safety Information in the copier *User Guide*.

### Terminology and conventions

This document uses the following terminology and conventions.

Term or convention	Refers to
Aero	GA-1310 (in illustrations and examples)
Copier	The copier attached to the GA-1310
GA-1310	GA-1310
Mac OS	Apple Mac OS X
Titles in <i>italics</i>	Other documents in this set
Windows	Microsoft Windows 2000, Windows XP, Windows Server 2003, Windows Vista
	Topics for which additional information is available by starting Help in the software
	Tips and information
	Important information
	Important information about issues that can result in physical harm to you or others

## About the documentation

This document is part of a set provided to users and system administrators of the GA-1310. The documents are on the User Documentation CD and are in PDF (Portable Document Format). These files can be viewed online or printed using Adobe Reader. When viewed online, these files contain links and cross-references that allow you to quickly and easily locate needed information. For more information, see “[Basic steps to print](#)” on page 6.

The following comprise the documentation set for your GA-1310:

- *Print Server Setup Roadmap* provides a graphical overview of the minimum Setup requirements to ensure that the GA-1310 functions on your network.
- *Welcome* provides an introduction to the GA-1310 and the user documentation.
- *Configuration and Setup* explains configuration and administration of the GA-1310 for the supported platforms and network environments. It also includes guidelines for providing printing services to users.
- *Printing from Windows* and *Printing from Mac OS* describe how to install the printer drivers on Windows and Mac OS computers, establish printing connections for different networks, and begin printing from users' computers. Each document also describes the installation and use of print-related utilities, such as Job Monitor and Printer Delete Utility.
- *Print Options* provides information about print options for the GA-1310. This document describes print options and features that you access from the printer driver, Command WorkStation job overrides, and Hot Folders job properties.
- *Utilities* describes how to scan and how to install, configure, and use the software utilities included on the User Software DVD.
- *Color Printing* explains how to manage color output on the GA-1310. This document provides information about ColorWise Pro Tools, including how to calibrate the GA-1310 and set ColorWise print options from Windows and Mac OS computers.
- *Fiery Color Reference* provides an overview of color management concepts and workflows, and describes how to manage color from various applications.
- *Workflow Examples* explains complicated printing scenarios and provides cross-references to relevant information in the documentation set.
- *Variable Data Printing* supplements the information in *Workflow Examples* with reference information about variable data printing (VDP). This document provides an overview of FreeForm and explains where to set FreeForm options.
- *Release Notes* provide last-minute product information and workarounds for some of the problems you may encounter.

## Viewing User Documentation

View or print the PDF files provided on the User Documentation CD using Reader or Acrobat. For information about installing Reader, visit the Adobe website. Once you install Reader, you can double-click a PDF icon to open the file. You can search for a word or phrase across the GA-1310 documentation set by examining all the documents within a specific language folder on the User Documentation CD. For information about using this and other features of Reader, see the Help that accompanies the application.

**NOTE:** You can view the documentation from the CD or copy the language folder to your desktop. If you copy the files to your computer, keep all the files in the language folder and do not rename the files, or the cross-reference links will not work properly.

## About Help



Most of the user software, utilities, and printer drivers contain Help that is accessible from Help buttons or the main toolbar menus. Help provides detailed procedures on using the application and, in some cases, provides additional detail. The documentation refers you to Help for more information, as appropriate.

## BASIC STEPS TO PRINT

The following section includes a basic workflow for setting up your GA-1310 in order to print documents. It takes you from printing a Configuration page and configuring Setup to installing printer drivers to print a job. Detailed instructions for all these procedures are found in other documents in the user documentation set. For a summary of supported GA-1310 documents, see [page 4](#).

These instructions assume that a service technician has unpacked and connected the GA-1310 and that the GA-1310 and copier are powered on. In some cases, initial print device settings may be required. See *Configuration and Setup*.

The following steps assume that you are adding the GA-1310 to a TCP/IP network that includes Windows XP user computers. Although this example is specific to a Windows XP TCP/IP environment, users in other computer environments may also benefit from these instructions.

## Step 1

### Print a Configuration page from the copier touch panel

Print the Configuration page and note the GA-1310 name and IP address. When you perform GA-1310 Setup and install the printer driver, you will need to reference this information.

- 1 **At the copier, press the Menu button.**
- 2 **On the copier touch panel, press Fiery and press the Info tab.**
- 3 **Press Configuration.**

The Configuration page prints.



- 4 **Review the default GA-1310 settings on the printed page and determine if they are compatible with your network environment.**

If you change these settings, print another Configuration page to verify the changes.

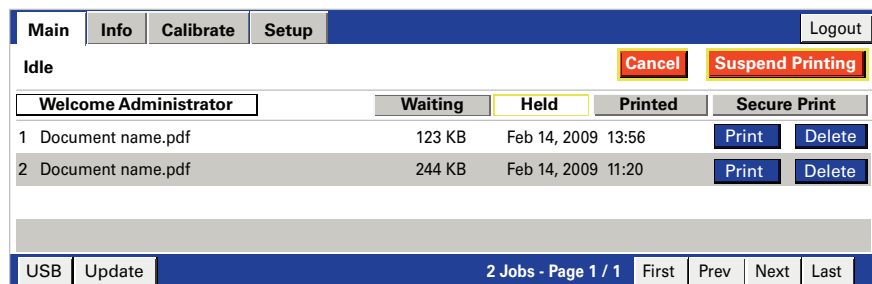
## Step 2

### Set up the GA-1310 from the copier touch panel

- 1 Make sure that the information screen on the copier touch panel reads **Idle**.

If Printing or RIPPING appears, the GA-1310 is processing, and you must wait until the system finishes and reaches the Idle state.

- 2 At the copier, press the **Menu** button.
- 3 On the copier touch panel, press **Fiery**.



- 4 Press the **Setup** tab.
- 5 Log in as **Administrator** with the **Administrator** password.
- 6 Press the button for the **Setup** submenu that you want to access.

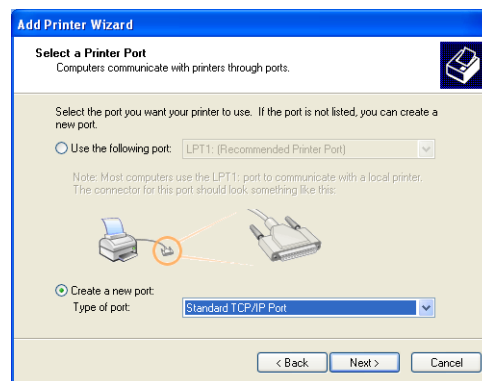
If your network uses DHCP, the GA-1310 acquires the IP address automatically. Otherwise, type the GA-1310 IP address.

## Step 3

### Install Postscript printer drivers on user computers for TCP/IP printing

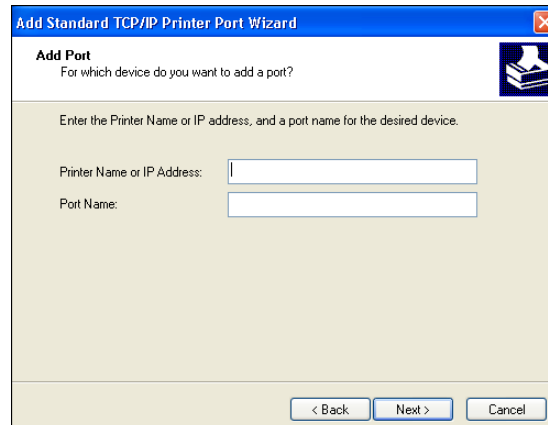
From a user's Windows XP computer:

- 1 Click Start and choose Printer and Faxes.
- 2 Click Add a printer.
- 3 Click Next.
- 4 Select "Local printer attached to this computer" and click Next.
- 5 Select Create a new port, choose Standard TCP/IP Port, and then click Next.



The Add Standard TCP/IP Printer Port Wizard dialog box appears.

- 6 Click Next.
- 7 Type the IP address or GA-1310 DNS name and click Next.



- 8 If the Standard TCP/IP Port Wizard window appears, select the Device Type and click Next.

- 9 **Click Finish.**
- 10 **Click Have Disk in the dialog box displaying lists of manufacturers and printers.**
- 11 **Insert the User Software DVD into the CD-ROM drive of your computer and browse to the English\Prntdrv\Ps\_drvr\Win\_2K\_XP\_VISTA folder.**

Make sure that Oemsetup.inf or Oemsetup is selected, click Open, and then click OK.

You can also download printer drivers from the Download WebTool.

- 12 **Select the GA-1310 printer driver as your printer and click Next.**
- 13 **Type a name for the GA-1310 in the Printer name field, indicate whether you want to make it the default printer, and then click Next.**
- 14 **Select Do not share this printer and click Next.**
- 15 **Select No to printing a Test Page, click Next, and then click Finish.**

The necessary files are installed on your hard disk. When installation is complete, the Printers window appears, with an icon for the newly installed printer.

For more information about installing Windows printer drivers, see [Printing from Windows](#).

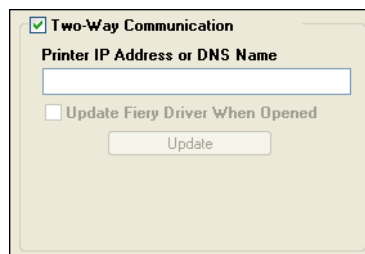
For information about installing Mac OS printer drivers, see [Printing from Mac OS](#).

## Step 4

### Update the printer driver to include GA-1310 options

From a user's Windows XP computer:

- 1 Click Start and choose Printers and Faxes.
- 2 In the Printers window, select the GA-1310 printer driver icon.
- 3 Choose Properties from the File menu.
- 4 Click the Accessories tab.
- 5 Select Two-Way Communication.



- 6 Type the GA-1310 IP address or DNS name.
- 7 Select Update Fiery Driver When Opened to display the printer's current default settings when the printer driver is opened.
- 8 Click Update.

Options such as finishing units that are installed on the GA-1310 are displayed in the printer driver and are available the next time you print a job.

- 9 Click OK.



For more information about updating printer drivers, see printer driver Help.

## Step 5

### Print a job

From a user's Windows XP computer:

- 1 **From your application, choose Print from the File menu.**
- 2 **Select the GA-1310 printer driver and click Properties.**
- 3 **Specify GA-1310 job options, such as Copies and finishing options, and then click OK.**



A screenshot of a 'Copies' dialog box. The box has a title bar that says 'Copies'. Inside the box, there is a text input field containing the number '1'. To the right of the input field is a small blue square with two white arrows pointing up and down, indicating a spinner control. Further to the right, the text '[1-9999]' is displayed, representing the range of possible values for the number of copies.

- 4 **Click OK again.**

For information about printing jobs from a Windows computer, see [Printing from Windows](#).

For information about printing jobs from a Mac OS computer, see [Printing from Mac OS](#).



After completing the basic steps to print, you may want to explore additional topics, depending on your printing environment. For example, creating secure user groups and assigning user passwords (see [WebTools Configure Help](#)) or managing and editing jobs submitted to the GA-1310 using utilities such as [Command WorkStation](#) (see [Utilities](#)).

## System requirements for user computers

To install the GA-1310 user software on a Windows or Mac OS computer, the computer must be equipped with a built-in or external DVD drive. The following table lists the minimum system requirements.

Minimum requirements for	Windows	Mac OS
Operating system	<p>The following Windows versions (with latest service packs) are supported:</p> <ul style="list-style-type: none"> <li>• Windows 2000 Professional</li> <li>• Windows 2000 Server</li> <li>• Windows 2000 Advanced Server</li> <li>• Windows XP Home, 32-bit</li> <li>• Windows XP Professional, 32-bit and 64-bit</li> <li>• Windows Server 2003, Standard Edition, 32-bit</li> <li>• Windows Server 2003, Enterprise Edition, 32-bit</li> <li>• Windows Server 2003, Datacenter Edition, 32-bit</li> <li>• Windows Server 2003 SP1, 64-bit</li> <li>• Windows Vista, Home Basic Edition, 32 and 64-bit</li> <li>• Windows Vista, Home Premium Edition, 32 and 64-bit</li> <li>• Windows Vista, Ultimate Edition, 32 and 64-bit</li> <li>• Windows Vista, Business Edition, 32 and 64-bit</li> <li>• Windows Vista, Enterprise Edition, 32 and 64 bit</li> <li>• Windows Vista, 64-bit (supported for Windows printer drivers and the Printer Delete Utility only)</li> </ul>	<p>Mac OS X v10.3.9 or later</p> <ul style="list-style-type: none"> <li>• Mac OS v10.3.9 (for PowerPC-based Mac OS computers)</li> <li>• Mac OS v10.4.x or later (for PowerPC and Intel-based Mac OS computers)</li> </ul>
Memory for printing and utilities	256MB of RAM for printing and operating utilities (512MB recommended)	
Networking protocol	TCP/IP	
Networking protocol for Fiery utilities	TCP/IP	TCP/IP (EtherTalk and AppleTalk supported)

Minimum requirements for	Windows	Mac OS
WebTools	Java-enabled web browser: <ul style="list-style-type: none"> <li>• Mac OS X: Safari v1.2 or later</li> <li>• Windows: Internet Explorer 6 and 7, Firefox v2.0</li> </ul> <b>NOTE:</b> Portions of WebTools require Java JVM v1.4.2 or later browser support. <b>NOTE:</b> Microsoft releases frequent updates to Internet Explorer. Because support cannot be guaranteed for all versions, use the versions specified for best results. A monitor and video memory that supports 16-bit color at a minimum resolution of 800x600 A TCP/IP-enabled network and the GA-1310 IP address or DNS name Web Services enabled on the GA-1310	
Command WorkStation	Windows-based computer with a 1.0GHz or greater Pentium III processor	At a minimum, an 800MHz Macintosh G3  (Intel-based Mac OS computers are supported)
	200MB available hard disk space for installation	80MB available hard disk space for installation  500MB is recommended for writing full previews of raster files and handling large PS or PDF files
	256MB of RAM	
	A monitor that supports 16-bit color at a minimum resolution of 1024x768  Video adapter card with 2MB of video memory  TCP/IP networking protocol installed	
Impose on Command WorkStation	In addition to requirements for Command WorkStation: <ul style="list-style-type: none"> <li>• Windows-based computer with 333MHz Pentium processor</li> <li>• Dongle to be installed on USB port for every client workstation</li> <li>• Acrobat/PitStop software</li> </ul>	

### Other network requirements

UNIX (TCP/IP) workstation	Standard TCP/IP connectivity TCP/IP printing software that conforms to RFC1179 (Berkeley lpd protocol) Sun OS 4.1.3 or later Red Hat Linux 9 or later Turbolinux 7 or later Solaris 9 or later
---------------------------	---

## Shutting down and restart the GA-1310

Occasionally, you may have to shut down the GA-1310. Network access to the copier is interrupted when you shut down the GA-1310.

---

### To SHUT DOWN THE GA-1310

- 1 Press and hold the On/Off button on the copier for 2 seconds.
  - 2 After the LED display on the GA-1310 turns blank, move the power switch on the GA-1310 to the Off position.
- 

### To REBOOT OR RESTART THE GA-1310

- 1 At the copier, press the Menu button.
- 2 At the copier touch panel, press Fiery.
- 3 Log in with the Administrator password.
- 4 On the copier touch panel, press Setup.
- 5 Press the Restart Server button.
- 6 Press Reboot System or Restart Server.